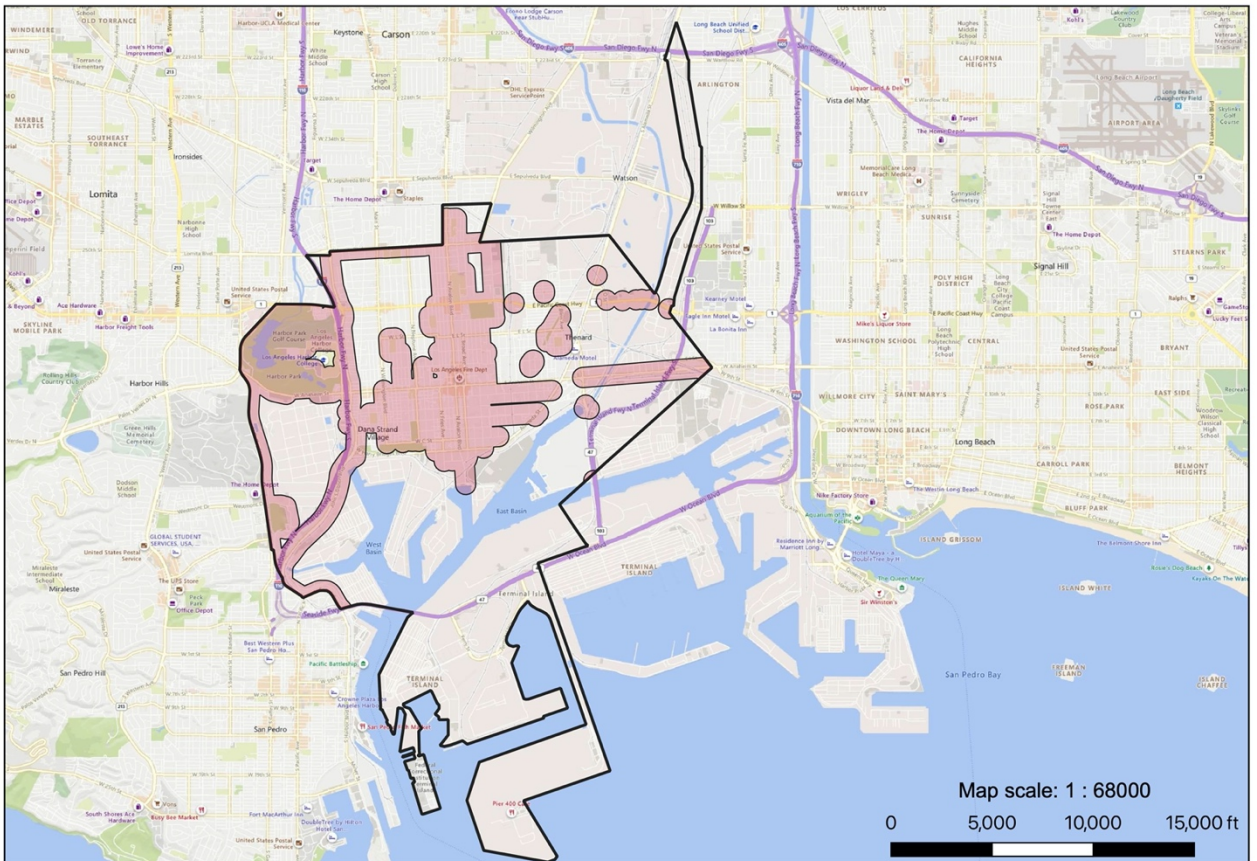


The Map of city facilities in Wilmington, Los Angeles

- Boundary of Wilmington, Los Angeles
- Bridges
- Parks and recreation facilities
- Homeless shelters
- School campuses
- Bikeways

Produced by Zedong Li
Data sources : Los Angeles GeoHub, Bing Map



The Map of proposed sidewalk camping exclusion area (500ft) in Wilmington, Los Angeles

- Proposed sidewalk camping exclusion area
- Boundary of Wilmington, Los Angeles

Produced by Zedong Li
Data sources : Los Angeles GeoHub, Bing Map

Data

The following data tables are demonstrating the information in Wilmington, Los Angeles.

Facilities	Numbers
Homeless shelters and service facilities	2
Los Angeles Unified School District school campuses	11

Facilities	Total Acreages
Parks and recreation areas	408.308679

Analysis

The proposed policy of banning sidewalk sleeping will create a 500ft exclusion area that includes bridges, bikeways, homeless shelters, schools, parks, recreation facilities, etc. In the Wilmington community, this policy will cover the most of area because the proposed sidewalk camping exclusion area almost occupies most parts of the community; based on *the Map of city facilities in Wilmington, Los Angeles*, there is a big part of parks and schools in this community. This policy will make a coherent exclusion area and cut off the remaining area into several small parts, and the policy restricts the migration of the homeless. Also, it is obvious that the bridges play an important role in creating the exclusion area because the 605 freeway makes a long exclusion barrier that goes from north to south. Still, the barriers lead to the gather of homeless that may affect some of the residential areas.